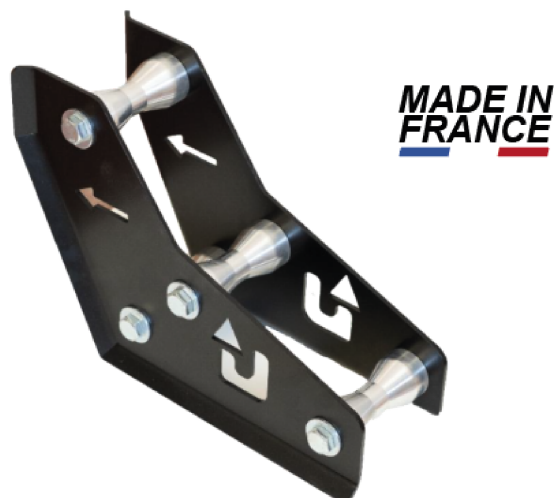


Road Rescue Ram Support



Technical Information

Maximum load: 269,5 Kn / 27,5t

Resistance: 120 Kn / 12,2t

L x W x H : 415 x 160 x 284 mm

Weight (with adaptor): 8.85 kg

Advantages

- The lightest on the market
- Can be used with the original cylinder head or the dedicated cylinder head

Accessories

- Ram TR