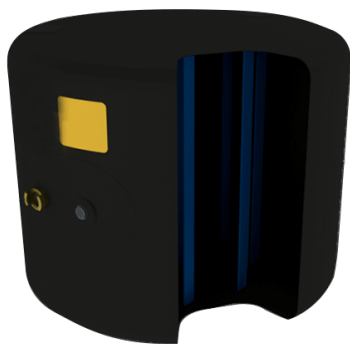


# Road Rescue Scorp'Air ES



## Technical Information

MODEL	Diameter (mm)	Race (mm)	Thick (mm)	Weight (Kg)	Pressure	ABILITY LIFTING MAX (Tonnes)	VOLUME AIR AT 10 BARS (Litres)
3T	610	430	50	3	1	3	266
5T	760	590	50	4	1	5	570
7T	910	610	70	7	1	7	840
12T	1220	1000	100	13	1	12	2475

## Advantages

- 4 different models available with 4 handles for easier handling ranging from 3 to 12 tons and with a large stroke ranging from 430 to 1000 m.
- Only 5 cm thick for easy insertion in tight spaces.
- Low pressure system (1 bar).
- Nitrile compound for high resistance to hydrocarbons.
- The lifting force is constant throughout the deployment.

## Accessories

- Scorp'Air ES Inflation kit