

AIRACLES

PNEUMATICS STRUTS PS50

Characteristics

WORKING PRESSURE : 12 BAR

FOLDED LENGTH: 53 cm

MAXIMUM LENGTH: 71 cm

STROKE: 18 cm

DIAMETER: 90 mm / 134 mm with the ring

WEIGHT: 5,7 kg

HIGH-STRENGTH ALUMINIUM ALLOY

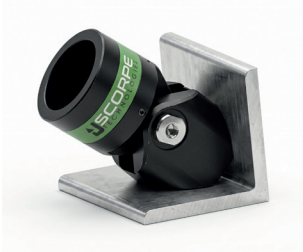
3 EXTENSIONS AVAILABLE:

EX30: 30 cm - 2kg,

EX60: 60 cm - 2,8kg,

EX90: 90 cm - 3,7kg

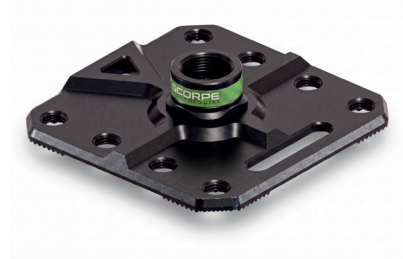
Bases for Airacles range



L Base
2 kg
15x13x10 cm

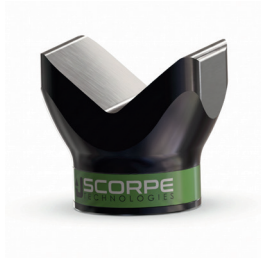


Fix 200 Base
1,1 kg
20x20x5,8 cm

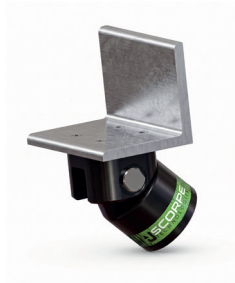


Fix 300 Base
2,8 kg
30x30x5,8 cm

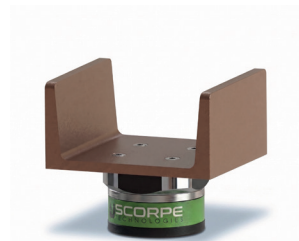
Heads for Airacles range



V Head
1,1 kg
10x8x10,5 cm



L Head
1,8 kg
15x10x20 cm



U Head
1,9 kg
15,6x12x17,5 cm



Chain Head
0,7 kg
7,6x7,6x12 cm



Concave Head
0,8 kg
12x8x8 cm