

# AIRACLES

## PNEUMATICS STRUTS PS120

### Characteristics

**WORKING PRESSURE : 12 BAR**

**FOLDED LENGTH: 123 cm**

**MAXIMUM LENGTH: 199 cm**

**STROKE: 76cm**

**DIAMETER: 90mm / 134 mm with the ring**

**WEIGHT: 11.2 kg**

**HIGH-STRENGTH ALUMINIUM ALLOY**

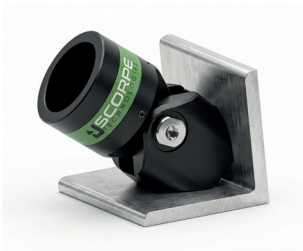
**3 EXTENSIONS AVAILABLE:**

**EX30: 30 cm - 2kg,**

**EX60: 60 cm - 2,8kg,**

**EX90: 90 cm - 3,7kg**

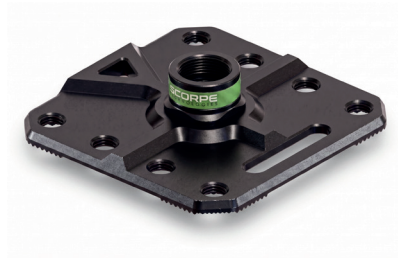
## Bases for Airacles range



**L Base**  
2 kg  
15x13x10 cm

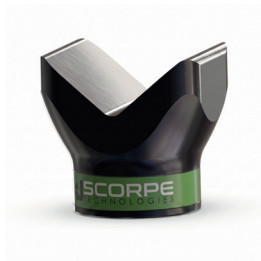


**Fix 200 Base**  
1,1 kg  
20x20x5,8 cm

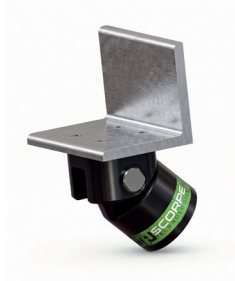


**Fix 300 Base**  
2,8 kg  
30x30x5,8 cm

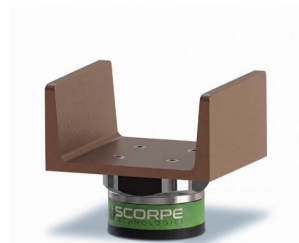
## Heads for Airacles range



**V Head**  
1,1 kg  
10x8x10,5 cm



**L Head**  
1,8 kg  
15x10x20 cm



**U Head**  
1,9 kg  
15,6x12x17,5 cm



**Chain Head**  
0,7 kg  
7,6x7,6x12 cm



**Concave Head**  
0,8 kg  
12x8x8 cm