



E-STAB ELECTRIC LIFTING AND STABILIZING STRUTS

A next-generation strut that combines **lifting and stabilizing** in one hybrid solution. Driven by a robust electric ball screw jack for precise, controlled movement with less operator effort.

Lifting Stroke
750mm

Dynamic load
10kN
1 tonne

Static load
18kN
1,8 tonnes



Remote control

Operate on the unit or from a safe distance, one strut or both simultaneously.



Milwaukee M18

Runs on the widely used M18 battery platform for easy fleet integration and less downtime.



Scorpe RAM range

Fully compatible with Scorpe RAM accessories for greater versatility on every scenario.



Adaptable heads

Multiple head options and an anchor plate adapt to varied vehicle structures.

Power, precision, versatility and operator safety,
a modern solution for emergency services and technical rescue teams
seeking faster deployment and superior stabilization.



*Include
Remote control*

E-STAB ELECTRIC LIFTING AND STABILIZING STRUTS

Characteristics

Hybrid strut allowing both lifting and stabilizing

Equipped with a powerful electric ball screw jack

Compatible with the M18 Milwaukee battery and the Scorpe RAM accessories kit

**The struts can be deployed on the spot with a toggle switch
or far away thanks to the remote control**

**The remote control allows the user to control
each strut individually as well as both simultaneously**

Each strut has 2 different heads and an anchor plate

Technical information

Dimensions : 250 x 90 x 1160 mm

Minimum Length : 1160 mm

Maximum Length : 1910 mm

Weight : 14kg (strut) / ~32kg (Kit)

Stroke : 750 mm

Static Load : 18 kN (1.8 t)

Dynamic Load : 10 kN (1 t)

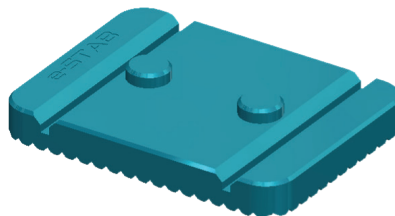
Accessories



Hollowed Head



Stepped Head



Anchor plate

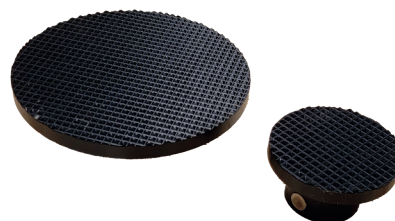
Compatible with



RAM Extensions



Milwaukee Battery M18



RAM Head