



# VERTICAL PENETRATOR

## Technical information

<b>OUTSIDER DIMENSIONS</b>	395 x 325 x 165 mm
<b>DIMENSIONS OF THE ACCESSORY BOX</b>	630 x 492 x 352 mm
<b>WEIGHT (WITH TRANSPORT CASE)</b>	43 kg
<b>OPERATING PRESSURE</b>	700 bar
<b>TANK VOLUME</b>	1 L
<b>SPREADING DISTANCE</b>	260 mm
<b>PREADING FORCE</b>	8 T / 79 kN

## Characteristics

- Autonomous portable kit (with dorsal harness) on battery, easy to carry,
- Allows you to overcome all obstacles (vehicle doors, armored doors, bars, hinges, etc.)
- Quiet in use,
- The Penetrator has a stroke of 260 mm and a pushing force of 79 kN,
- Pressure of 700 bar.

### The advantages of vertical opening with the Penetrator :

- Utilization of the upper pillar and the ground for support
- Silent operation
- Ergonomic design, featuring a handle for grip
- Design and materials carefully engineered to combine lightness and robustness through topological optimization

**ROBUST, EFFICIENT, AND HIGHLY SILENT  
AUTONOMOUS INTERVENTION KIT.**



### Kit composition :

- 1 hydraulic unit 700 bar,
- 1 vertical penetrator,
- 1 flexible of 1.5 m.

**Sales service :**  
+33 (0)3 24 73 00 08

**After Sales :**  
sav@scorpe.eu  
+33 (0)3 24 73 00 02

# PENETRATOR - ACCESSORIES

## Technical information

### DIMENSIONS AND GENERALITIE

<b>OUTSIDER DIMENSIONS</b> (LxIxh)	395 x 325 x 165 mm
<b>NOISE LEVEL</b>	64 dBA

### ELECTRICAL SPECIFICATIONS

<b>RATED VOLTAGE</b>	24V CC
<b>PROTECTION</b> (HYDRAULIC PUMP)	IP54
<b>ELECTRICAL CONNECTION</b>	Connecteur de batterie intégré au groupe
<b>REMOTE CONTROL</b>	2 buttons with cable (1.5m)

### POWER SUPPLY

<b>VOLTAGE</b>	24V CC
<b>BRAND AND MODEL</b>	Makita - BH2433
<b>BATTERY TYPE</b>	Ni-MK
<b>CHARGER</b>	220-240 VAC / 50-60 Hz
<b>RUNNING TIME</b>	40 min (depends on the use)
<b>BATTERY CAPACITY</b>	3.1 Ah
<b>BATTERY CHARGE LEVEL</b>	Bargraph on the hydraulic pump
<b>FLOW RATE</b>	0,6 l/min
<b>TANK VOLUME</b>	1 liter
<b>OPERATING PRESSURE</b>	700 bar / 70 Mpa / 10 000 Psi
<b>HYDRAULIC HOSE LENGHT</b>	1,5 m
<b>WEIGHT HYDRAULIC PUMP</b> <b>+ REMOTE CONTROL +</b> <b>CARRYING BAG (WHITOUT</b> <b>BATTERY)</b>	9 kg

## Hydraulic unit



**Sales service :**  
+33 (0)3 24 73 00 08

**After Sales :**  
sav@scorpe.eu  
+33 (0)3 24 73 00 02

# PENETRATOR - ACCESSORIES

## Technical information

DIMENSIONS DEPLOYED (LxIxh)	697 x 140 x 140 mm
DIMENSIONS RETURNED (LxIxh)	437 x 140 x 140 mm
WEIGHT	7 kg
TOOLS TYPE	Simple effect
SPREADING DISTANCE	260 mm
JAW WIDTH	140 mm
SPREADING FORCE	7900 daN / 79 kN / 8,05 T
WORKING PRESSURE	700 bar / 70 Mpa / 10 000 Psi
OIL VOLUME NEEDED	0,5 liter
CONNECTION	Rotating CEJN G1/4"

## Door opener



## Technical information

Use with grip on the upper upright and the floor.

DIMENSIONS (LxIxh)	1050 x 180 x 140 mm
MOUNTED RAM DIMENSIONS (LxIxh)	1200 x 180 x 190 mm
WEIGHT	11,5 kg
WEIGHT WITH RAM	18,5 kg

Sold with its carrying bag

## Vertical Penetrator



## Technical information

Transport your equipment easily.  
The integrated wedging cushions and the straps ensure a good maintenance of your tools.

## Transport bag



Sales service :  
+33 (0)3 24 73 00 08

After Sales :  
sav@scorpe.eu  
+33 (0)3 24 73 00 02

# PENETRATOR - OPTIONS

## Technical information

To be mounted on the cylinder. Allows for door opening.

**WEIGHT** 3 kg

### Sabot



## Technical information

**LENGHT** 250 mm  
**DIAMETER** 60 mm  
**WEIGHT** 1.94 kg

**LENGHT** 350 mm  
**DIAMETER** 60 mm  
**WEIGHT** 2.74 kg

**LENGHT** 500 mm  
**DIAMETER** 60 mm  
**WEIGHT** 3.92 kg

### Ram extensions - 3 sizes

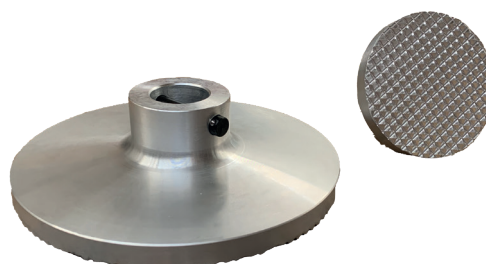


## Technical information

**DIMENSIONS** Ø 100 x 55 mm  
**WEIGHT** 5 kg

**DIMENSIONS** Ø 200 x 55 mm  
**WEIGHT** 1.29 kg

### Ram cylinder head - 2 sizes



**Sales service :**  
+33 (0)3 24 73 00 08

**After Sales :**  
sav@scorpe.eu  
+33 (0)3 24 73 00 02