



# HORIZONTAL PENETRATOR

## Technical information

|  |                    |
|--|--------------------|
| <b>OUTSIDER DIMENSIONS</b>             | 395 x 325 x 165 mm |
| <b>DIMENSIONS OF THE ACCESSORY BOX</b> | 630 x 492 x 352 mm |
| <b>WEIGHT (WITH TRANSPORT CASE)</b>    | 43 kg              |
| <b>OPERATING PRESSURE</b>              | 700 bar            |
| <b>TANK VOLUME</b>                     | 1 L                |
| <b>SPREADING DISTANCE</b>              | 260 mm             |
| <b>SPREADING FORCE</b>                 | 8 T / 79 kN        |

## Characteristics

- Autonomous portable kit (with dorsal harness) on battery, easy to carry,
- Allows you to overcome all obstacles (vehicle doors, armored doors, bars, hinges, etc.)
- Quiet in use,
- The Penetrator has a stroke of 260 mm and a pushing force of 79 kN,
- Pressure of 700 bar.

### The advantages of horizontal opening with the Penetrator :

- Support on lateral pillars
- Silent operation
- Ergonomic design, featuring a handle for grip
- Design and materials carefully engineered to combine lightness and robustness through topological optimization

### STURDY, EFFICIENT SELF-CONTAINED INTERVENTION KIT



### Kit composition :

- 1 hydraulic unit 700 bar,
- 1 horizontal penetrator,
- 1 flexible of 1.5 m.

# PENETRATOR - ACCESSORIES

## Technical information

### DIMENSIONS AND GENERALITIE

|                                       |                    |
|---------------------------------------|--------------------|
| <b>OUTSIDER DIMENSIONS</b><br>(LxIxh) | 395 x 325 x 165 mm |
| <b>NOISE LEVEL</b>                    | 64 dBA             |

### ELECTRICAL SPECIFICATIONS

|                                       |  |
|---------------------------------------|--|
| <b>RATED VOLTAGE</b>                  | 24V CC                                   |
| <b>PROTECTION</b><br>(HYDRAULIC PUMP) | IP54                                     |
| <b>ELECTRICAL CONNECTION</b>          | Connecteur de batterie intégré au groupe |
| <b>REMOTE CONTROL</b>                 | 2 buttons with cable (1.5m)              |

### POWER SUPPLY

|  |                                |
|--|--------------------------------|
| <b>VOLTAGE</b>   | 24V CC                         |
| <b>BRAND AND MODEL</b>   | Makita - BH2433                |
| <b>BATTERY TYPE</b>  | Ni-MK                          |
| <b>CHARGER</b>   | 220-240 VAC / 50-60 Hz         |
| <b>RUNNING TIME</b>  | 40 min (depends on the use)    |
| <b>BATTERY CAPACITY</b>  | 3.1 Ah                         |
| <b>BATTERY CHARGE LEVEL</b>  | Bargraph on the hydraulic pump |
| <b>FLOW RATE</b>   | 0,6 l/min                      |
| <b>TANK VOLUME</b>   | 1 liter                        |
| <b>OPERATING PRESSURE</b>  | 700 bar / 70 Mpa / 10 000 Psi  |
| <b>HYDRAULIC HOSE LENGHT</b>   | 1,5 m                          |
| <b>WEIGHT HYDRAULIC PUMP</b><br><b>+ REMOTE CONTROL +</b><br><b>CARRYING BAG (WHITOUT</b><br><b>BATTERY)</b> | 9 kg                           |

## Hydraulic unit



**Sales service :**  
+33 (0)3 24 73 00 08

**After Sales :**  
sav@scorpe.eu  
+33 (0)3 24 73 00 02

# PENETRATOR - ACCESSORIES

## Technical information

|                             |                               |
|-----------------------------|-------------------------------|
| DIMENSIONS DEPLOYED (LxIxh) | 697 x 140 x 140 mm            |
| DIMENSIONS RETURNED (LxIxh) | 437 x 140 x 140 mm            |
| WEIGHT                      | 7 kg                          |
| TOOLS TYPE                  | Simple effect                 |
| SPREADING DISTANCE          | 260 mm                        |
| JAW WIDTH                   | 140 mm                        |
| SPREADING FORCE             | 7900 daN / 79 kN / 8,05 T     |
| WORKING PRESSURE            | 700 bar / 70 Mpa / 10 000 Psi |
| OIL VOLUME NEEDED           | 0,5 liter                     |
| CONNECTION                  | Rotating CEJN G1/4"           |

## Technical information

Use with grip on the side uprights.

|                                |                    |
|--------------------------------|--------------------|
| DIMENSIONS (LXLXH)             | 400 x 105 x 203 mm |
| MOUNTED RAM DIMENSIONS (LXLXH) | 800 x 105 x 203 mm |
| WEIGHT                         | 6.5 kg             |
| WEIGHT WITH RAM                | 13.5 kg            |

Sold with its carrying bag

## Technical information

Transport your equipment easily.  
The integrated wedging cushions and the straps ensure a good maintenance of your tools.

### Door opener



### Horizontal Penetrator



### Transport bag



**Sales service :**  
+33 (0)3 24 73 00 08

**After Sales :**  
sav@scorpe.eu  
+33 (0)3 24 73 00 02

# PENETRATOR - OPTIONS

## Technical information

To be mounted on the cylinder. Allows for door opening.

**WEIGHT** 3 kg

### Sabot



## Technical information

**LENGHT** 250 mm  
**DIAMETER** 60 mm  
**WEIGHT** 1.94 kg

**LENGHT** 350 mm  
**DIAMETER** 60 mm  
**WEIGHT** 2.74 kg

**LENGHT** 500 mm  
**DIAMETER** 60 mm  
**WEIGHT** 3.92 kg

### Ram extensions - 3 sizes

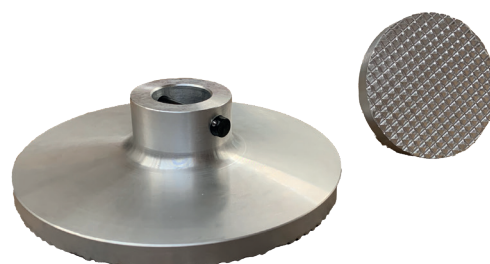


## Technical information

**DIMENSIONS** Ø 100 x 55 mm  
**WEIGHT** 5 kg

**DIMENSIONS** Ø 200 x 55 mm  
**WEIGHT** 1.29 kg

### Ram cylinder head - 2 sizes



**Sales service :**  
+33 (0)3 24 73 00 08

**After Sales :**  
sav@scorpe.eu  
+33 (0)3 24 73 00 02