



PENETRATOR

Technical information

OUTSIDER DIMENSIONS	395 x 325 x 165 mm
DIMENSIONS OF THE ACCESSORY BOX	630 x 492 x 352 mm
WEIGHT (WITH TRANSPORT CASE)	43 kg
OPERATING PRESSURE	700 bar
TANK VOLUME	1 L
SPREADING DISTANCE	260 mm
SPREADING FORCE	8 T / 79 kN
SPREADING FORCE	13 T / 130 kN
MAX SPREADING DISTANCE	161 mm
CUTTING FORCE	30 T / 300 kN
FORCE OF THE PISTON	8 T
CUT OPENING	40 mm
CUTTING CAPACITY	Ø18 mm

Characteristics

- Autonomous portable kit (with dorsal harness) on battery, easy to carry,
- Allows you to overcome all obstacles (vehicle doors, armored doors, bars, hinges, etc.)
- Quiet in use (64 dB decibels),
- Spreader with a very large spreading distance: 161 mm,
- The Penetrator has a stroke of 260 mm and a pushing force of 79 kN,
- Lightweight cutter with a high cutting force of 300 kN,
- Pressure of 700 bar.

**ROBUST AUTONOMOUS INTERVENTION KIT,
VERY SILENT AND EFFICIENT.**



Ideal combination of tools for forcing and cutting

Kit composition :

- 1 hydraulic unit 700 bar,
- 1 mini cutter,
- 1 spreader,
- 1 door opener,
- 1 flexible of 1.5 m,
- 1 breaching opener.

As options:

- 1 vertical penetrator,
- 1 horizontal penetrator,
- the complete kit (Classic Penetrator, Vertical Penetrator, & Horizontal Penetrator)

Sales service :
+33 (0)3 24 73 00 08

After Sales :
sav@scorpe.eu
+33 (0)3 24 73 00 02

PENETRATOR - ACCESSORIES

Technical information

DIMENSIONS AND GENERALITIE

OUTSIDER DIMENSIONS (LxIxh)	395 x 325 x 165 mm
NOISE LEVEL	64 dBA

ELECTRICAL SPECIFICATIONS

RATED VOLTAGE	24V CC
PROTECTION (HYDRAULIC PUMP)	IP54
ELECTRICAL CONNECTION	Connecteur de batterie intégré au groupe
REMOTE CONTROL	2 buttons with cable (1.5m)

POWER SUPPLY

VOLTAGE	24V CC
BRAND AND MODEL	Makita - BH2433
BATTERY TYPE	Ni-MK
CHARGER	220-240 VAC / 50-60 Hz
RUNNING TIME	40 min (depends on the use)
BATTERY CAPACITY	3.1 Ah
BATTERY CHARGE LEVEL	Bargraph on the hydraulic pump
FLOW RATE	0,6 l/min
TANK VOLUME	1 liter
OPERATING PRESSURE	700 bar / 70 Mpa / 10 000 Psi
HYDRAULIC HOSE LENGHT	1,5 m
WEIGHT HYDRAULIC PUMP + REMOTE CONTROL + CARRYING BAG (WHITOUT BATTERY)	9 kg

Hydraulic unit



Sales service :
+33 (0)3 24 73 00 08

After Sales :
sav@scorpe.eu
+33 (0)3 24 73 00 02

PENETRATOR - ACCESSORIES

Technical information

Use with grip on the upper upright and the floor.

DIMENSIONS (LxIxh)	1050 x 180 x 140 mm
MOUNTED RAM DIMENSIONS (LxIxh)	1200 x 180 x 190 mm
WEIGHT	14 kg

Sold with its carrying bag

Vertical Penetrator



Technical information

Use with grip on the side uprights.

DIMENSIONS (LxIxh)	400 x 105 x 203 mm
MOUNTED RAM DIMENSIONS (LxIxh)	800 x 105 x 203 mm
WEIGHT	7.5 kg

Sold with its carrying bag

Horizontal Penetrator



Technical information

DIMENSIONS DEPLOYED (LxIxh)	697 x 140 x 140 mm
DIMENSIONS RETURNED (LxIxh)	437 x 140 x 140 mm
WEIGHT	10.5 kg
TOOLS TYPE	Simple effect
SPREADING DISTANCE	260 mm
JAW WIDTH	140 mm
SPREADING FORCE	7900 daN / 79 kN / 8,05 T
WORKING PRESSURE	700 bar / 70 Mpa / 10 000 Psi
OIL VOLUME NEEDED	0,5 liter
CONNECTION	Rotating CEJN G1/4"

Door opener



Sales service :
+33 (0)3 24 73 00 08

After Sales :
sav@scorpe.eu
+33 (0)3 24 73 00 02

PENETRATOR - ACCESSORIES

Technical information

DIMENSIONS	267 x 205 x 52 mm
WEIGHT	3.8 kg
MAX OPENING DISTANCE	40 mm
TOOLS TYPE	Simple effect
CUTTING CAPACITY	Ø 18mm (soft steel)
FORCE OF THE PISTON	7900 daN / 79 kN / 8.05 T
CUTTING FORCE	300 kN
WORKING PRESSURE	700 bar / 70 Mpa / 10 000 Psi
OIL VOLUME NEEDED	0.1 liter
CONNECTION	CEJN G1/4"

Cutter



Technical information

DIMENSIONS OPENED (LxIxh)	318 x 161 x 104 mm
DIMENSIONS CLOSED (LxIxh)	318 x 140 x 104 mm
WEIGHT	5.6 kg
TOOLS TYPE	Simple effect
MAX SPREADING DISTANCE	161 mm
MIN SPREADING DISTANCE	5 mm
WIDTH OF JAW	55 mm
SPREADING FORCE	130 kN
WORKING PRESSURE	700 bar / 70 Mpa / 10 000 Psi
OIL VOLUME NEEDED	0.1 litre
CONNECTION	CEJN G1/4"

Spreader



Technical information

LENGHT	550 mm
WEIGHT	3.6 kg
COMPOSITION	Micro-metal
HANDLE COMPOSITION	Electrically nonconductive fiberglass (resistant to 100,000 volts AC)

Breaching opener



Technical information

DIMENSIONS (LxIxh)	630 x 492 x 352 mm
WEIGHT	11.33 kg
PROTECTION	IP 67
(TRANSPORT CASE)	(Waterproof and dustproof)
CASING MATERIAL	Polypropylène copolymère
SHELL MATERIAL	Polypropylène copolymère

Transport case



Sales service :
+33 (0)3 24 73 00 08

After Sales :
sav@scorpe.eu
+33 (0)3 24 73 00 02

PENETRATOR - OPTIONS

Technical information

To be mounted on the cylinder. Allows for door opening.

WEIGHT 3 kg

Sabot



Technical information

LENGHT 250 mm
DIAMETER 60 mm
WEIGHT 1.94 kg

LENGHT 350 mm
DIAMETER 60 mm
WEIGHT 2.74 kg

LENGHT 500 mm
DIAMETER 60 mm
WEIGHT 3.92 kg

Ram extensions - 3 sizes

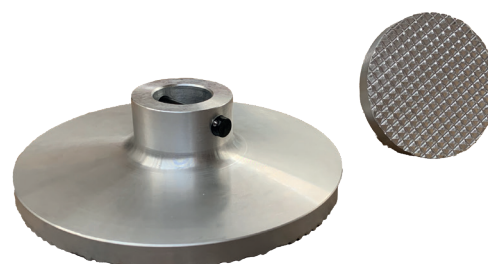


Technical information

DIMENSIONS Ø 100 x 55 mm
WEIGHT 5 kg

DIMENSIONS Ø 200 x 55 mm
WEIGHT 1.29 kg

Ram cylinder head - 2 sizes



Sales service :
+33 (0)3 24 73 00 08

After Sales :
sav@scorpe.eu
+33 (0)3 24 73 00 02