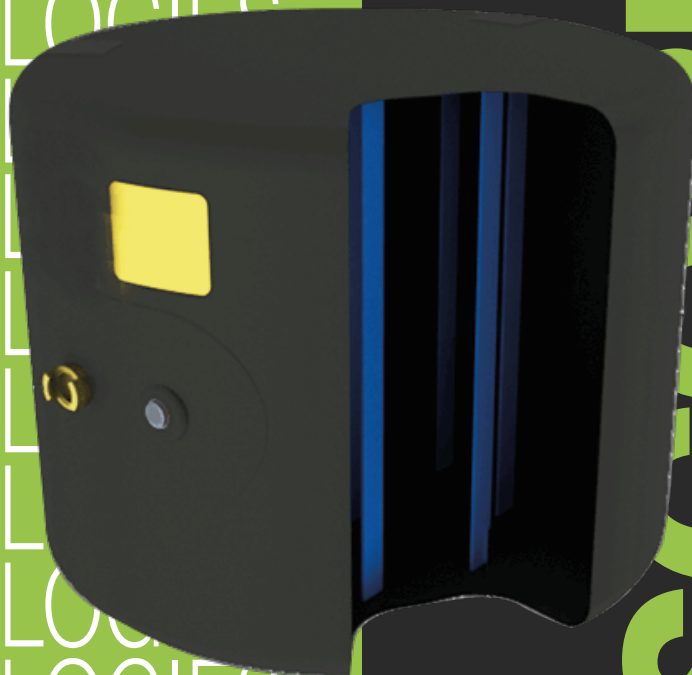




# SCORPE

TECHNOLOGIES  
TECHNOLOGIES  
TECHNOLOGIES  
TECHNOLOGIES  
TECHNOLOGIES  
TECHNOLOGIES  
TECHNOLOGIES  
TECHNOLOGIES  
TECHNOLOGIES  
TECHNOLOGIES



SCORPE  
TECHNOLOGIES

Service Commercial : +33 3 24 73 00 08  
SAV : sav@scorpe.eu / +33 3 24 73 00 02

## MANUEL : SCORP'AIR ES

A range of low-pressure lifting cushions has been designed for any operation requiring emergency cushions with high lifting capacity and long strokes.

[www.scorpe.net](http://www.scorpe.net)  
SCORPE Technologies,  
5 route de Laon, 08190 Saint-Germainmont

### **BIENVENUE**

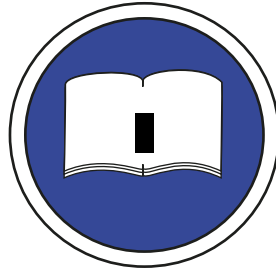
Thank you for choosing our SCORP'AIR ES lifting cushion. Please read this manual carefully before using the product. This range is available from 3T to 12T, with a working pressure of 1 bar. Their cylindrical shape provides them with great stability.

# CONTENTS

1. Généralités .....	page 3
2. Équipement de protection individuelle .....	page 4
3. Précautions d'emploi .....	page 5
4. Présentation du produit .....	page 5
5. Utilisation .....	page 6
6. Accessoires .....	pages 6 to 8
7. Maintenance .....	page 8
8. Storage .....	page 8
9. Warranties .....	page 9
10. Notes .....	page 10



# 1. GENERAL INFORMATION



The SCORP'AIR ES tool should only be operated by individuals who have read this manual.

Thank you for purchasing this product from Scorpe Technologies. This manual is intended to explain how to use our product, how to maintain it, and ensure its longevity. This manual is an integral part of the product and must be kept in a location known to the staff and accessible at all times. To ensure your safety, the safety of others, and to guarantee the product's lifespan, we ask that you strictly follow the instructions noted herein. Every user or operator using our product must have read and understood this manual. This manual must remain available to anyone using or handling our product.

This manual provides important remarks regarding the handling of the SCORP'AIR ES equipment. Safe operation requires compliance with all safety instructions and handling guidelines defined herein. Additionally, local accident prevention regulations in force at the equipment's location, as well as general safety provisions, must also be followed.

All elements in this manual (information, technical specifications, graphics, and illustrations) are based on the latest information available at the time of writing.

In addition to carefully reading this manual, we recommend contacting our qualified trainer who can provide training on the use of rescue equipment (usage possibilities, usage strategy, etc.).

## 2. PERSONAL PROTECTIVE EQUIPMENT

When handling rescue equipment, it is essential to wear personal protective equipment (PPE) to minimize the risk of injury. **Failure to wear this equipment can result in serious injuries.**



During all work activities, wearing safety clothing is mandatory. Wear close-fitting work clothes with tight sleeves and no protruding parts. These garments primarily provide protection against moving parts of the equipment.



To protect against falling heavy objects and to prevent slipping on slippery floors, always wear safety shoes with steel toe caps.



For protection against sharp edges and glass breakage, wear work gloves during the operation of the equipment.



For protection against projections, falling objects, and glass shards, it is essential to wear a helmet with a visor.



In addition to the visor, wearing safety goggles is mandatory to protect the eyes from flying debris.

During specific tasks, also wear the following items:

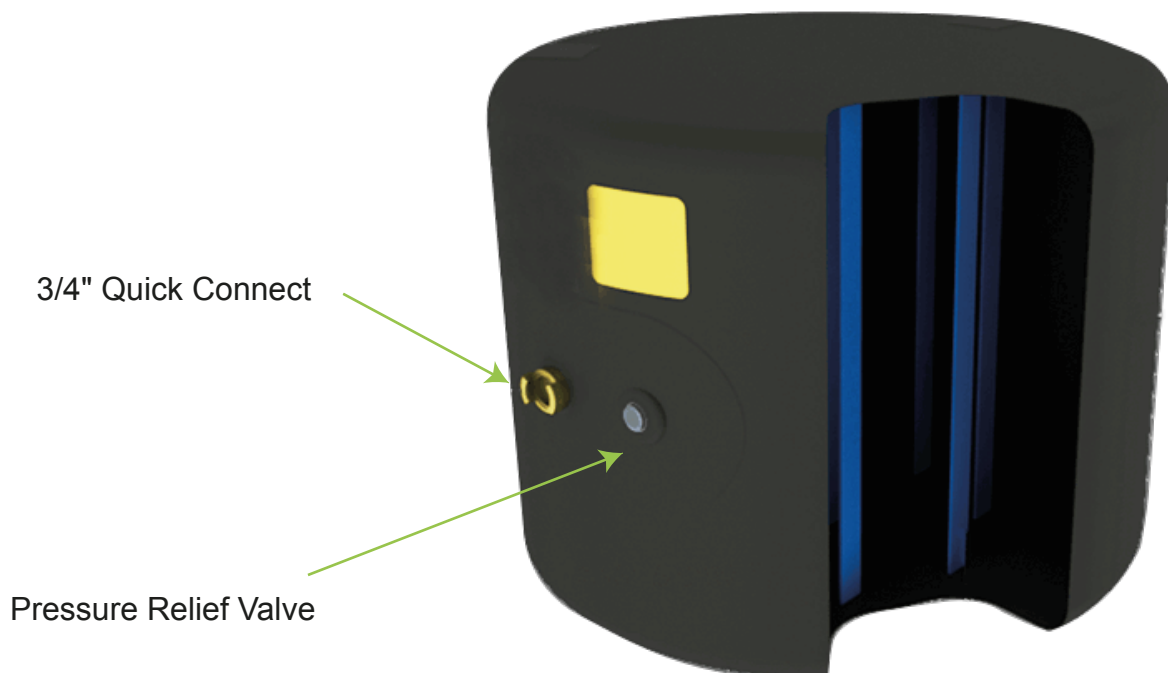


For protection against auditory impairment, wearing hearing protection is mandatory in addition to basic personal protective equipment.

### 3. PRECAUTIONS FOR USE

- Temperature range: -20 to +55°C.
- Avoid contact with excessively abrasive or sharp surfaces.
- Stabilize and guide the load to be lifted.
- For any contact with chemicals, consult us.
- Do not place your hand or any part of your body between the load and the cushion during operation.
- Never stand underneath the lifted load.
- Maintain a safe distance during cushion use.
- Use only the feeding and connection devices prescribed by SCORPE for inflation and deflation.
- Never exceed the maximum pressures indicated on the product.
- If the feeding pressure exceeds the operating pressure, use a pressure regulator.
- Use appropriate Personal Protective Equipment (PPE) such as helmet, goggles, ear protection, safety shoes, protective clothing, and gloves.

### 4. PRODUCT PRESENTATION



SCORPE

## 5. OPERATION

- Lifting cushions can be inflated with compressed air or water.
- If compressed air contains oil, use an oil separator.
- Use the handles on the sides to position the cushions.
- If the base is slippery, use non-cutting elements between the cushion and the floor to increase grip.
- Operate the lifting cushion while monitoring the movement of the load.
- Strictly adhere to the operating strokes indicated on the product.
- The maximum inflation pressure is 1 bar.
- Consult us for any technical questions.

## 6. ACCESSORIES

**The following accessories are necessary for inflating the cushions:**

- Compressed air cylinder or other air supply
- Pressure regulator if using an air cylinder
- Manual controller
- Air hose
- Safety valves

**The configuration of the handheld controller prevents inflating the cushions to an operating pressure exceeding 1 bar.**

**It is strictly forbidden to bypass the control device by connecting the relief valve directly to the cushion.**

**The control system includes safety valves and pressure gauges calibrated to the maximum allowable pressure, preventing any over-inflation of the cushions.**





- Air hoses are available in two lengths: 5 and 10 meters. They are color-coded for easy identification of the connection between the cushion and the handheld control device.
- The air hoses are equipped with double-locking safety connectors.
- To connect the flexible hose, insert the hose fitting into the cushion connector until you feel it firmly engage. You should hear an audible "click."
- To disconnect, release both ends simultaneously by pressing one end and pulling the other. This breaks the connection and prevents accidental uncoupling.

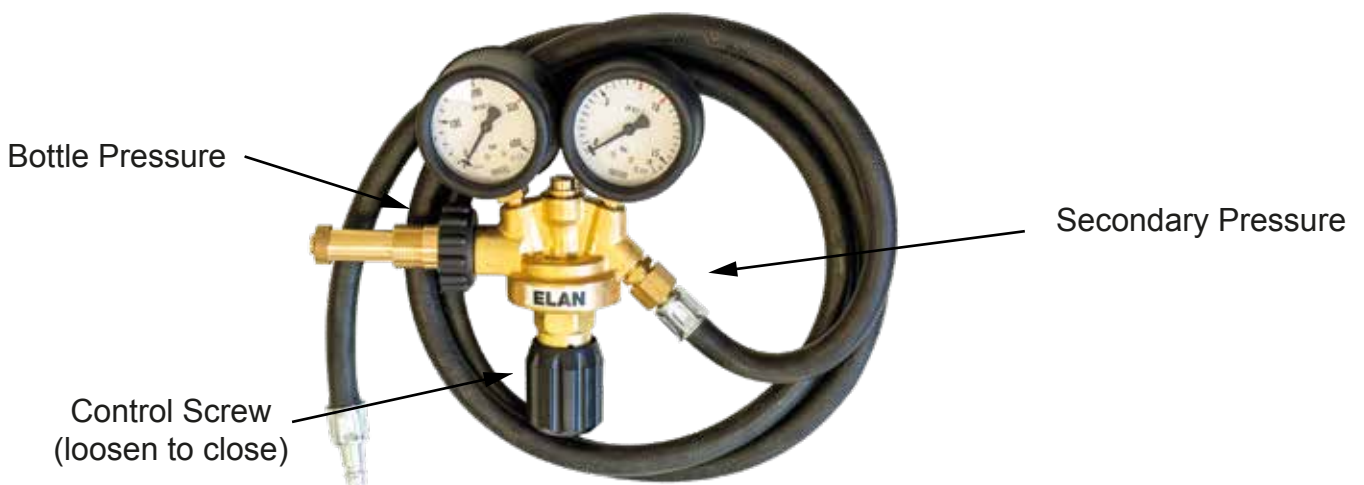
#### Air Supply with an External Source:

If the supply pressure exceeds 1 bar, a relief valve must be used.

If the compressed air contains oil, use an oil separator.

#### Air Supply with a 200 or 300 Bar Cylinder:

- Connect the pressure regulator to the compressed air cylinder, ensuring the O-ring is properly seated on the regulator.
- Close the pressure-reducing valve by unscrewing the control knob.
- Turn on the valve on the bottle while holding the end of the hose: the pressure gauge indicates the pressure in the air bottle.
- Connect the air supply hose to the control unit by pushing the fitting into the connector.
- Adjust the control knob to achieve a secondary pressure of 1 bar.



#### Using the Lifting Cushions with a Manual Controller:



There are several models of control boxes, with two or three outlets, allowing the operator to independently control different cushions. The operation is performed using a "dead man's" lever, and pressure is controlled by a pressure regulator for each outlet.

- To inflate to the desired lifting height, follow the pictograms displayed on the control box.
- If the maximum operating pressure of 1 bar is reached, the inflation process must be stopped by releasing the control lever, which automatically returns to the central position.
- To deflate, follow the pictograms on the control box.
- When the lifting process is complete, disconnect the inflated cushions and the corresponding air hoses. Close the air inlet. To empty the relief valve or the air hose connected to the external air supply, pull the control lever, then briefly press it to release the air from the integrated check valves.

## 7. MAINTENANCE

### After each use: visual inspection

- Check the integrity of the outer surface and ensure there are no excessive deformations (wrinkles, bubbles, or cuts).
- If there is any doubt or anomaly, consult the manufacturer before using the product again.
- Clean the product thoroughly with mildly soapy water without detergent, rinse, and completely dry it.

### At least once a year: functional inspection

- Carefully inflate the lifting cushion to a pressure of 0.5 bar.
- Check for the absence of defects (cracks, cuts, etc.).

**If there is any doubt about safety (defect detection, etc.), discontinue use of the product and contact the manufacturer.** For safety reasons, any repairs are not possible.

## 8. STORAGE

### This product must be stored:

- Deflated after each use
- Flat or rolled in its packaging
- Protected from light
- At room temperature and humidity conditions of 40 to 70%
- Protected from any aggressive elements (corrosive products and vapors, solvents, marine environments, rodents...)



## 9. WARRANTY

The SCORP'AIR ES is covered by a full one-year warranty (1). (Does not include transport and customs fees, if applicable.)

If you encounter any issues, please contact:

**SCORPE TECHNOLOGIES**  
**After-Sales Service**  
 Email: [simon.hammer@scorpe.eu](mailto:simon.hammer@scorpe.eu)  
 Tel: +33 (0)3 24 73 00 02

MODEL	SIZE (mm)			Weight (Kg)	PRESSURE	ABILITY LIFTING MAX (Tonnes)	VOLUME AIR AT 10 BARS (Litres)
	Diameter	Race	Thick				
3T	610	430	50	3	1	3	266
5T	760	590	50	4	1	5	570
7T	910	610	70	7	1	7	840
12T	1220	1000	100	13	1	12	2475

